



INTERPOL



VULNERABLE COMMUNITIES

Future-oriented policing projects



In keeping with its consistent support of international organisations to strengthen the global community, the United Arab Emirates – through the Interpol Foundation for a Safer World – is funding seven INTERPOL projects within seven crime areas, including Counter Terrorism, Cybercrime, Illicit Drug Trade, Illicit Goods and Global Health, Vehicle Crime, Vulnerable Communities and Protecting Cultural Heritage.



The INTERPOL Foundation for a Safer World is the rallying point for likeminded organizations to unite with INTERPOL to respond to today's crime challenges. It encourages an international commitment and partnership with the private sector to protect citizens, infrastructures, businesses and investments from the threats of terrorism, cybercrime and organized crime.



**MIGRANT SMUGGLING,
HUMAN TRAFFICKING AND
CHILD EXPLOITATION**



THE ISSUES

At INTERPOL, we work to address the escalating challenges connected to migrant smuggling, human trafficking and online child exploitation, with the aim of disrupting the organized networks behind these crimes.

› HUMAN TRAFFICKING

Trafficking in human beings is a multi-billion dollar form of international organized crime which affects every region in the world. Victims are recruited and trafficked between regions and countries using deception, threats or force.

In the majority of cases, women, men and children are trafficked for sexual exploitation and forced labour.

Trafficking in human beings is a crime under international law and many national and regional legal systems. While the majority of countries have adopted the Palermo Protocol to Prevent, Suppress and Punish Trafficking in Persons, especially Women and Children, and now have legislation to deal with the issue, these laws are not always enforced.



› MIGRANT SMUGGLING

Closely connected is the issue of people smuggling, a crime that has been brought into sharp focus by the ongoing irregular migrant crisis to Europe. Findings in the May 2016 Migrant Smuggling Networks Joint Europol-INTERPOL Report suggest that **90% of the migrants entering the EU are facilitated through criminal networks**, and originate from more than 100 source and transit countries. Current intelligence suggests that this trend is applicable to other regions as well.

Reports show that the vast majority of migrants acknowledge having paid for the facilitation of their movements. Organized crime networks – including those that have been traditionally engaged in arms and drugs smuggling – have been quick to take advantage of the crisis to make money. Traditional smuggling methods, such as concealment, forged documents and dangerous means of transport continue to be used all over the world.

› CHILD EXPLOITATION

Crimes against children have also risen dramatically in recent years, mostly due to the expansion of the Internet and other communication technologies. The Internet serves to normalize the issue among criminals and to make increasing amounts of child abuse material available in both picture and movie form.

There is a clear link between a country's Internet usage and online child exploitation.

With only 40% of the world's population connected to the Internet, there will be a massive increase in this type of crime in coming years, especially in developing regions, as more people gain Internet access. There is an urgent need to tackle online child exploitation especially in those countries where cultural factors and gaps in law enforcement capacity mean that offending will remain unchecked.

INTERPOL'S ROLE

› COORDINATE

Given the complexities of the issues of human trafficking, people smuggling and crimes against children, a range of strategies are necessary. At INTERPOL, we have much expertise and experience in a number of relevant areas and the ability to coordinate activities between the law enforcement community and other stakeholders across the globe.

› SHARE INFORMATION

The sharing of information is fundamental to law enforcement investigations. We enable our member countries to share alerts, data and intelligence through secure channels, in order to improve cooperation on international cases and help prevent criminals and known offenders from crossing borders.

› FIELD SUPPORT

We also support national police in tactical deployments in the field, aimed at breaking up the criminal networks behind trafficking in human beings and people smuggling. Operations are preceded by training workshops to ensure that officers on the ground are trained in a range of skills, including specialist interview techniques and the use of specialized equipment. Deployments effectively combine police action with input from different sectors such as customs, non-governmental organizations, health ministries and prosecutors.

› ICSE DATABASE

In particular, the International Child Sexual Exploitation (ICSE) image database is a key tool, using sophisticated image and video comparison software to help identify victims, abusers and locations. As of January 2017, investigators in 49 countries had direct access to the database and have assisted in the identification of more than 10,000 victims of child sexual abuse and the arrest of thousands of offenders.

5 children
identified
every day in 2016

10,000
victims identified



4,700
offenders arrested

49 countries
+Europol
are connected
to the Database

LOOKING AHEAD





Combating migrant smuggling, human trafficking and online child exploitation has taken a position of priority in international policy agendas. INTERPOL is uniquely positioned to coordinate efforts across sectors and countries with the broad goal of dismantling the international criminal networks behind trafficking in human beings, people smuggling and online child exploitation.

Within this, our main objectives are to enhance law enforcement capacity, carry out victim-centric investigations and operations, identify and rescue victims, and enable police to build strong cases that allow the successful prosecution of criminals.

To this end, our three main activities are centred on training, information sharing and law enforcement operations in the field, consolidating our previous achievements in these areas and taking them to the next level.



› TRAINING

Coordinated, targeted training is essential in order to enhance police capabilities in our member countries. We will provide comprehensive theoretical training to the law enforcement community, backed up by practical tabletop exercises, while a train-the-trainer approach will allow participants to pass on their knowledge and expertise to colleagues. This will all contribute to the development of a broad network of specialized law enforcement officers working in line with best practices. Other initiatives include training in related fields such as border security, financial crimes, counter terrorism and fraudulent and forged documents and the development of tailored resources, such as handbooks, manuals and e-learning modules.

› INFORMATION EXCHANGE

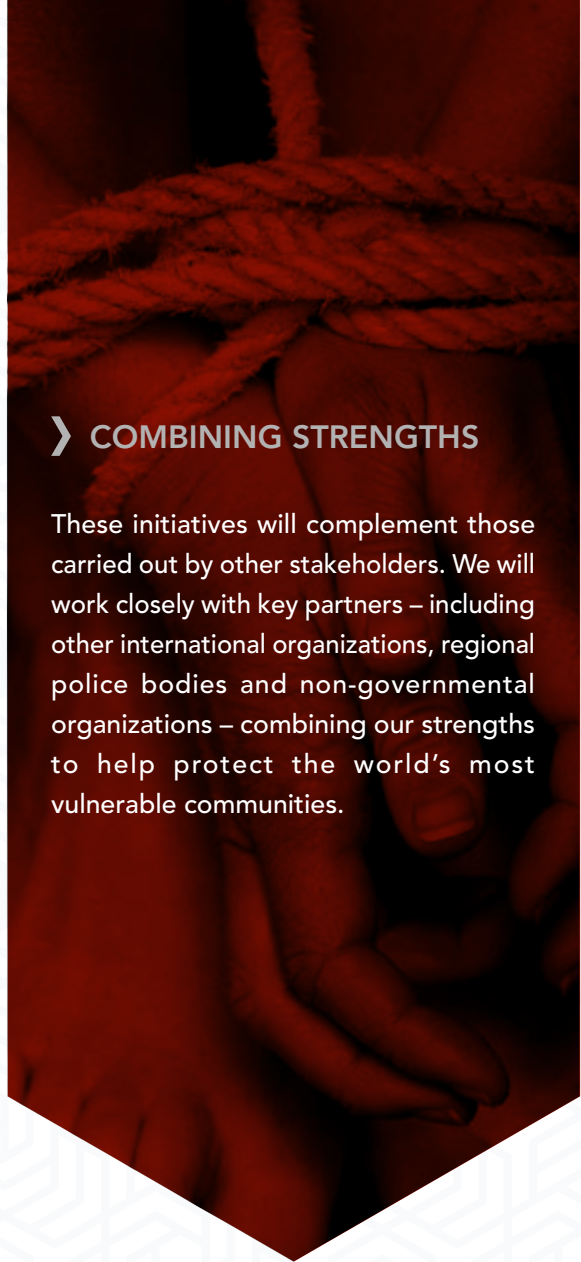
Also of utmost importance is the exchange of information among multiple countries for investigative and strategic purposes. This will be made quicker, more efficient and more wide-reaching through the platforms provided by the INTERPOL Specialists Operational Network (ISON) on People Smuggling, the INTERPOL Human Trafficking Expert Group and the INTERPOL Specialist Group on Crimes against Children. These three groups will provide formal and informal channels of communication through appointed experts in each country and encourage an ethos of sharing data nationally, regionally and internationally.

› OPERATIONS

We will also support member countries in carrying out law enforcement operations on the ground. Not only will this translate theoretical knowledge into practical application but will deliver increased results in terms of criminals arrested and victims rescued. In online child exploitation, priority will be given to upgrading the International Child Sexual Exploitation (ICSE) image database and related technical services to increase the power and accuracy of the system.

› COMBINING STRENGTHS

These initiatives will complement those carried out by other stakeholders. We will work closely with key partners – including other international organizations, regional police bodies and non-governmental organizations – combining our strengths to help protect the world's most vulnerable communities.



E CONTRE LE TRAFIC DES ENFANTS



INTERPOL

www.interpol.int